

# ADESSO

**KENETHCOBONPUE**



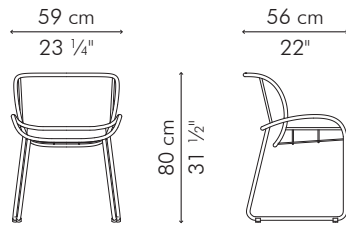
ARMCHAIR  
DINING TABLE

designed by Federica Capitani

⚙ polyethylene, aluminum

⚙ fiberglass, aluminum

## ARMCHAIR



### OUTDOOR



5.5 kg / 12 lbs



10 kg / 22 lbs



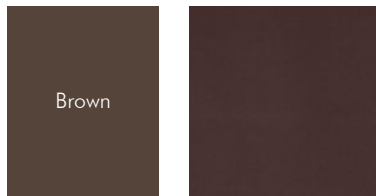
0.26 m<sup>3</sup>



SEAT 1.50 m / 1.65 yds

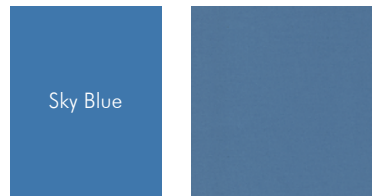
### OUTDOOR polyethylene, aluminum

#### CAAS-B-2131OD-UF



Canvas Iris

#### CAAS-SB-2131OD-UF



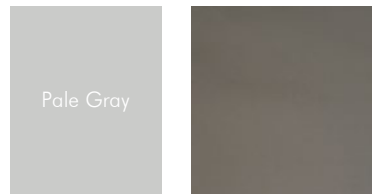
Canvas Sky Blue

#### CAAS-LG-2131OD-UF



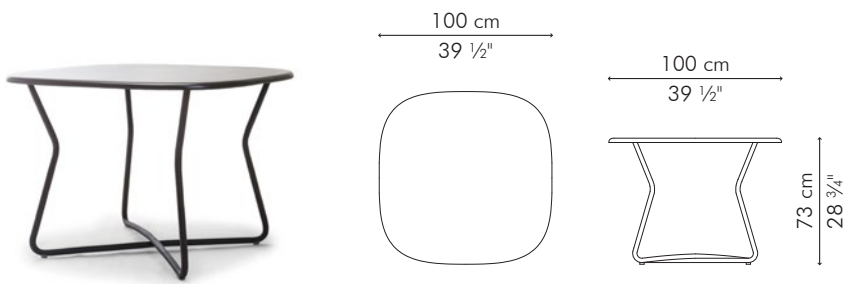
Canvas Macaw

#### CAAS-PG-2131OD-UF



Spectrum Graphite

## DINING TABLE



### OUTDOOR

 19 kg / 42 lbs

 26 kg / 57 lbs

 0.22 m<sup>3</sup>

### OUTDOOR fiberglass, aluminum

Brown

TDAS-B-3928OD

Sky Blue

TDAS-SB-3928OD

Lime Green

TDAS-LG-3928OD

Pale Gray

TDAS-PG-3928OD